

**Anti-Rat IgA (alpha chain) (Fluorescein Conjugated) Secondary Antibody**  
**Goat Polyclonal, Fluorescein (FITC)**  
**Catalog # ASR2405****Specification****Anti-Rat IgA (alpha chain) (Fluorescein Conjugated) Secondary Antibody - Product Information**

Description	<b>Anti-RAT IgA (alpha chain) (GOAT) Antibody Fluorescein Conjugated</b>
Host	<b>Goat</b>
Conjugate	<b>Fluorescein (FITC)</b>
FP Value	<b>9.4 moles Fluorescein (FITC) per mole of IgG</b>
Target Species	<b>Rat</b>
Clonality	<b>Polyclonal</b>
Application	<b>IF, FC</b>
Application Note	<b>FLISA 1:10,000-1:50,000;IF Microscopy 1:1,000-1:5,000;FlowCytometry 1:500-1:2,500</b>
Physical State	<b>Lyophilized</b>
Host Isotype	<b>IgG</b>
Target Isotype	<b>IgA</b>
Buffer	<b>0.02 M Potassium Phosphate, 0.15 M Sodium Chloride, pH 7.2</b>
Immunogen	<b>Rat IgA alpha heavy chain</b>
Reconstitution Volume	<b>1.0 mL</b>
Reconstitution Buffer	<b>Restore with deionized water (or equivalent)</b>
Stabilizer	<b>10 mg/mL Bovine Serum Albumin (BSA) - Immunoglobulin and Protease free</b>
Preservative	<b>0.01% (w/v) Sodium Azide</b>

**Anti-Rat IgA (alpha chain) (Fluorescein Conjugated) Secondary Antibody - Additional Information****Shipping Condition**

Ambient

**Purity**

This product was prepared from monospecific antiserum by immunoaffinity chromatography using Rat IgA coupled to agarose beads followed by solid phase adsorption(s) to remove any unwanted reactivities. Assay by immunoelectrophoresis resulted in a single precipitin arc against anti-Fluorescein, anti-Goat Serum, Rat IgA and Rat Serum. Specificity was confirmed by ELISA at less than 1% cross reactivity against other rat heavy or light chain isotypes.

**Storage Condition**

Store vial at 4° C prior to restoration. For extended storage aliquot contents and freeze at -20° C or below. Avoid cycles of freezing and thawing. Centrifuge product if not completely clear after standing at room temperature. This product is stable for several weeks at 4° C as an undiluted liquid. Dilute only prior to immediate use.

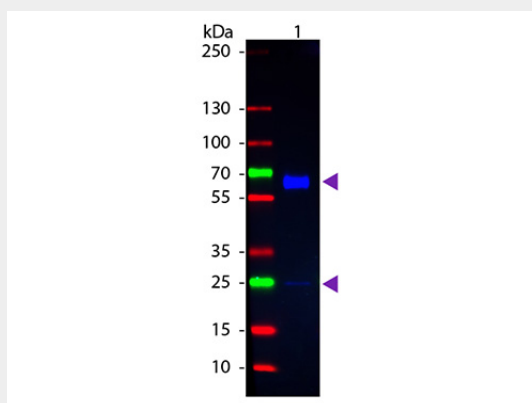
**Precautions Note**

This product is for research use only and is not intended for therapeutic or diagnostic applications.

**Anti-Rat IgA (alpha chain) (Fluorescein Conjugated) Secondary Antibody - Protein Information****Anti-Rat IgA (alpha chain) (Fluorescein Conjugated) Secondary Antibody - Protocols**

Provided below are standard protocols that you may find useful for product applications.

- [Western Blot](#)
- [Blocking Peptides](#)
- [Dot Blot](#)
- [Immunohistochemistry](#)
- [Immunofluorescence](#)
- [Immunoprecipitation](#)
- [Flow Cytometry](#)
- [Cell Culture](#)

**Anti-Rat IgA (alpha chain) (Fluorescein Conjugated) Secondary Antibody - Images**

Western blot of Fluorescein conjugated Goat Anti-Rat IgA (Alpha chain) secondary antibody. Lane 1: Mouse IgA Kappa chain. Lane 2: None. Load: 100 ng per lane. Primary antibody: None. Secondary antibody: Fluorescein goat secondary antibody at 1:1,000 for 60 min at RT. Blocking: MB-070 for 30 min at RT. Observed/Predicted size: 55 kDa, 55 kDa for Rat IgA. Other band(s): IgA light chain.

**Anti-Rat IgA (alpha chain) (Fluorescein Conjugated) Secondary Antibody - Background**

This product is designed for immunofluorescence microscopy, fluorescence based plate assays (FLISA) and fluorescent western blotting. This product is also suitable for multiplex analysis, including multicolor imaging, utilizing various commercial platforms.